

# MULTIPLUS



## **Rainbow Pool Products**

PO Box 2388, Mansfield Qld 4122

Telephone STD 61-7-3849 5385

Facsimile STD 61-7-3849 5384

Email: [info@rainbowpoolproducts.com.au](mailto:info@rainbowpoolproducts.com.au)

Web: [www.rainbowpoolproducts.com.au](http://www.rainbowpoolproducts.com.au)

# **INSTALLATION & USER GUIDE**

# CONTENTS

PRODUCT SUPPORT	1
READ THIS FIRST	2
MULTI PLUS SETUP	2
MANUAL MODE USER INSTRUCTIONS	4
WIRING INFORMATION	5
OPERATING MODE COLOURS	6

## PRODUCT SUPPORT & INFORMATION

For further information or technical assistance please feel free to contact our Customer Service Department on:

Phone: +61 3 9793 2299

Email: [info@spaelectrics.com.au](mailto:info@spaelectrics.com.au)

Web: [www.spaelectrics.com.au](http://www.spaelectrics.com.au)

# MULTI PLUS SETUP

## READ THIS FIRST

The MULTI-PLUS light has 5 inbuilt modes of operation for use on a variety of different control systems or installation types.

When you first install your MULTI-PLUS light it will operate in the default, 'Manual' mode for use with a wall switch. In order to connect the light to a 3rd party pool controller OR change to a different operating mode please follow the below steps.

### STEP 1 - POOL CONTROLLER SETUP

If connecting to a pool controller, please ensure the system is fully installed and you have completed all the relevant steps in the controller setup menu to operate the lights correctly.

**During pool controller setup you will be prompted to select which light model is installed. Please use the below table to select the appropriate light for your pool controller type.**

[For more information on this please refer to the pool controller installation manual].

POOL CONTROLLER	SELECT LIGHT MODEL
Astral <b>Connect 10</b> (2016 to current)	SLX Light
Jandy <b>Aqualink RS</b> (F/W Rev. 'R' - Current)	Intellibrite Light
Zodiac <b>Aqualink TRI</b>	Intellibrite Light
Pentair <b>EasyTouch</b>	Intellibrite Light
Pentair <b>IntelliTouch</b>	Intellibrite Light

#### iRIS Setup

If installing the MULTI PLUS with an iRIS remote, please see the iRIS installation manual for 'Quick Setup' procedure.

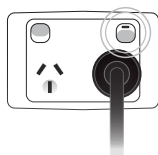
**NOTE:** Some older pool controllers may not support these models. Please contact the controller manufacturer for upgrade assistance.

### STEP 2 - LIGHT SETUP

**IMPORTANT:** Ensure Lights have been off for **30 seconds** prior to performing this step.

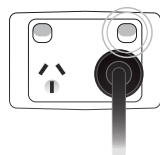
**NOTE:** This step can either be performed via a wall switch OR via the controller panel/Mobile App.

#### A. TURN LIGHTS ON



WAIT 1 SECOND

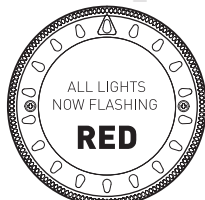
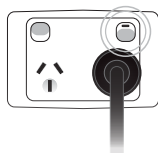
#### TURN LIGHTS OFF



WAIT 10 SECONDS  
(min 10s - max 15s)

[ REPEAT  
x 3 ]

#### B. TURN LIGHTS ON



#### NOTE:

If ALL Lights connected to circuit are NOT continuously flashing RED, please turn Lights OFF & wait 30 seconds before repeating STEP 2

Continue to STEP 3

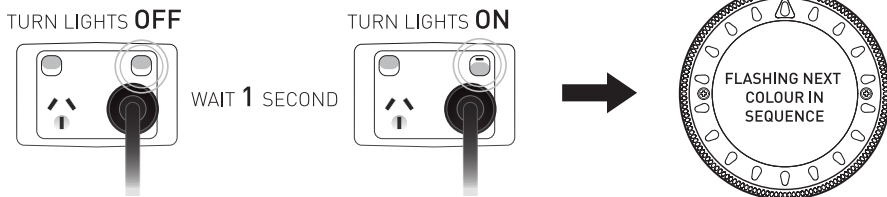


# MULTI PLUS SETUP cont.

## STEP 3 - SELECTING OPERATING MODE

After accessing SETUP MODE (STEP 2) the lights will **FLASH RED** continuously. This is MODE 1 (Manual mode)

Use the below process to change the operating mode to correspond to the required controller or operating type below.



**IMPORTANT:** Once desired mode is reached (i.e. "Flashing Green - iRIS Mode) leave power turned ON and continue to STEP 4

'FLASHING' COLOUR	CONTROLLER / OPERATING TYPE	LIGHT MODEL SELECTED*
1. RED	Manual Mode (wall switch)	-
2. GREEN	Spa Electrics iRIS Controller	-
3. MAGENTA	Astral Connect 10 (2016 to current)	SLX Light
4. WHITE	Jandy Aqualink RS (F/W Rev. 'R'-Current)	Intellibrite Light
	Zodiac Aqualink TRI	Intellibrite Light
	Pentair EasyTouch	Intellibrite Light
	Pentair IntelliTouch	Intellibrite Light
5. BLUE	Standard MULTI Mode* (wall switch)	-

Continue to STEP 4

### \*Light Model Selected:

This indicates the model of light to be selected in the Pool Controller setup menu. Refer to STEP 1 of this manual for more information or please contact Spa Electrics. (03) 9793 2299

### \*Standard MULTI Mode:

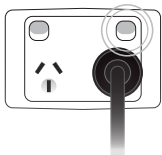
This mode allows the MULTI PLUS light to operate in the standard Spa Electrics MULTI-Colour mode. This mode should only be used when operating a MULTI PLUS from a wall switch or RM-2 in conjunction with a standard Spa Electrics MULTI-Colour light. For more information please contact Spa Electrics. (03) 9793 2299

## MULTI PLUS SETUP cont.

### STEP 4 - SAVING OPERATING MODE

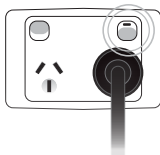
Once the desired operating mode is selected follow these steps to save the selection.

TURN SYSTEM **OFF**



WAIT 30 SECONDS

TURN SYSTEM **ON**



#### Important

You must wait at least **30** Seconds prior to turning the system back **ON** or selection process will fail and setup will need to be restarted.

### STEP 5 - CONFIRM OPERATION

Your setup should now be complete. To confirm the system is working correctly, select a colour via the controller or wall switch (depending on operating mode selected) and check to ensure all lights are synchronised and the correct colour is displayed.

Refer to pg. 6 for available colours.

## MANUAL MODE USER INSTRUCTIONS

### OPERATING INSTRUCTIONS

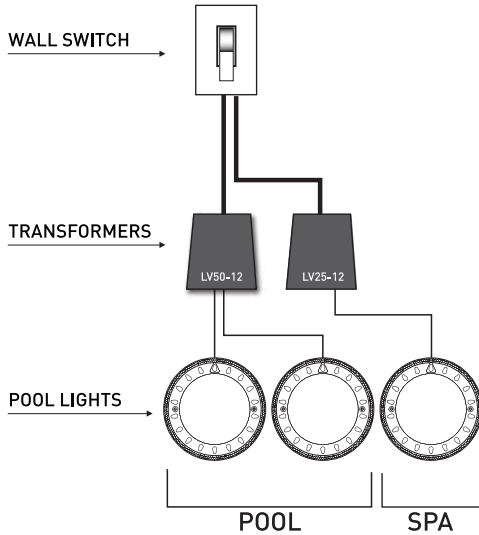
1. To change the color of the light, simply turn your light **OFF** for **2** seconds and then turn it back **ON**. This will signal the light to proceed to the next colour in sequence.  
To select a desired colour, simply step through the colours until you find your desired selection.  
**Refer to pg. 6 for available colours.**
2. Your lights will automatically save your selected colour once the power has been turned **OFF** for more than **1** minute. So the next time the lights are used, they will illuminate on the last colour operated.
3. To reset or 'synchronize' your lights; with the power turned **ON**, turn the power **OFF/ON** once rapidly. This will **RESET** your lights to **WHITE**

### SYNCHRONIZED INSTALLATION

When installing multiple lights, to ensure synchronization and ease of operation ALL Lights must operate from a single switch.

# WIRING INFORMATION

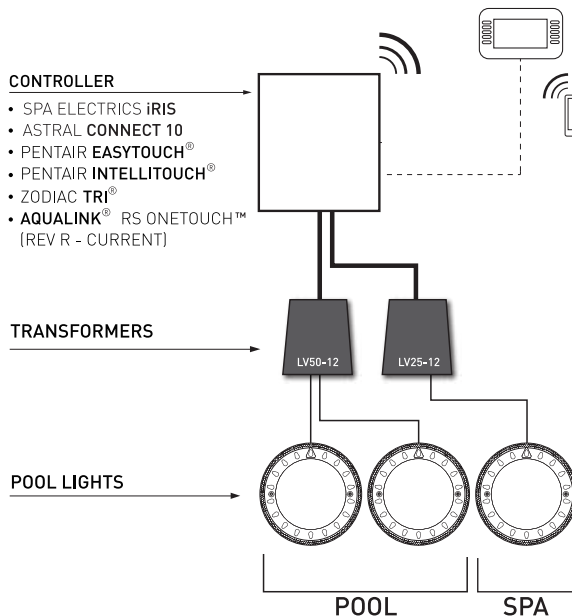
## MANUAL MODE OPERATION (SYNCHRONISED POOL & SPA)



### SYNCHRONIZED INSTALLATION

When installing multiple lights, to ensure synchronization and ease of operation ALL Lights must operate from a single switch.

## CONNECTING TO POOL/LIGHTING CONTROLLER



# OPERATING MODE COLOURS

## MANUAL MODE

1	WHITE 4000K
2	AQUA
3	BLUE
4	MAGENTA
5	RED
6	LIME
7	GREEN
8	OCEANIC VIEWS
9	TRANSCENDENCE
10	OUTBACK AUSTRALIA
11	SPRING EQUINOX

## iRIS MODE

1	WHITE 4000K
2	AQUA
3	BLUE
4	MAGENTA
5	RED
6	LIME
7	GREEN
8	OCEANIC VIEWS
9	TRANSCENDENCE
10	OUTBACK AUSTRALIA
11	SPRING EQUINOX

## CONNECT 10 MODE

1	BLUE
2	MAGENTA
3	RED
4	ORANGE
5	GREEN
6	AQUA
7	WHITE 4000k
8	CUSTOMISED COLOUR
9	RAINBOW PATTERN
10	OCEAN PATTERN
11	DISCO PATTERN

## INTELLIBRITE MODE

1	SAM
2	PARTY
3	ROMANCE
4	CARIBBEAN
5	AMERICAN
6	CALIFORNIA SUNSET
7	ROYAL
8	BLUE
9	GREEN
10	RED
11	WHITE 4000k
12	MAGENTA

## STANDARD MULTI\* MODE

1	BLUE
2	MAGENTA
3	RED
4	LIME
5	GREEN
6	AQUA
7	WHITE 1
8	WHITE 2
9	SLOW COLOUR BLEND
10	FAST COLOUR CHANGE

### \*Standard MULTI Mode:

This mode allows the MULTI PLUS light to operate in the standard Spa Electrics MULTI-Colour mode. This mode should only be used when operating a MULTI PLUS from a wall switch or RM-2 in conjunction with a standard Spa Electrics MULTI-Colour light. For more information please contact Spa Electrics. (03) 9793 2299